



**Los Angeles County  
Office of Education**



# Educational Tips & Strategies for Supporting Youth as They Return to In-Person Education

## **Foster Youth Services Technical Assistance Program**

Presented by:

**Michelle Lustig, Ed.D, MSW**

Program Director

**Kim Faulkner-Camacho, M.S. P.P.S.**

Coordinator III

**Elizabeth Clews**

Youth Advocate & Former Foster Youth



# Today's Presenters



Dr. Michelle Lustig, Program Director

Los Angeles County Office of Education,  
Foster Youth Services Technical  
Assistance Program

Kim Faulkner-Camacho, Coordinator

Los Angeles County Office of Education,  
Foster Youth Services Technical Assistance  
Program

Elizabeth Clews, Youth Advocate

Ventura County Office of Education,  
Foster Youth Services Coordinating  
Program

Calli Oxford, ILP/FYS Program Manager

Lassen County Foster Youth Services



# Presentation Agenda

- Students on probation and in foster care
- Defining Trauma & Grit
- The Effects of Negative Labeling
- Redefining GRIT
- The Lived Experience of a Former Dual Status Systems Involved Youth
- Education Entitlements for Systems Involved Youth

# Youth in Foster Care on Probation

- **60,000** youth in foster care in CA
- **33,000** in Los Angeles County
- Point in time data from the California Child Welfare Indicators Project shows there were **2,162 youth in foster care on probation** in California as of 2020

California Child Welfare Indicators Project (CCWIP)  
University of California at Berkeley  
California Department of Social Services, Research and Data Insights Branch  
Children in Foster Care  
Agency Type: Probation  
California

Age Group	Point In Time	
	Oct 1, 2019 n	Oct 1, 2020 n
Under 1	0	0
1-2	0	0
3-5	0	0
6-10	0	0
11-15	483	297
16-17	1,139	744
18-21	1,029	1,121
Missing	0	0
<b>Total</b>	<b>2,651</b>	<b>2,162</b>

# Probation Officers: Why Your Role Matters to Students On Probation

Probation officers are in a unique position to:

- Help students communicate their needs to school staff (teachers, educators, administrators, etc.)
  - Act as the liaison between schools and parents to help students get back on track
- Act as a supportive adult in their lives, especially for youth in foster care
- Provide students access to resources such as mental health counseling, educational needs, career development, and more
- Help students bounce back; contribute to or build resilience and tap into GRIT

**2000**  
19,000 youth  
in detention.  
State focus  
heavily on  
incarceration.

State begins  
investment in  
Probation leading  
to development  
services for youth.



**2000**  
Probation supported  
Schiff-Cardenas Crime  
Prevention Act signed  
by Governor;  
Challenge Grants  
begin

Probation targets  
services to high-  
risk youth and  
diverts low-risk  
youth from  
system.  
Refer youth to  
interventions  
to address  
their needs.

**2006**  
Probation starting  
to use the Risk  
Needs Responsivity  
principles

Probation  
implements  
programming to  
keep youth closer  
to families and  
communities;  
service more youth  
in the community  
with wrap-around  
services. Supported  
ban of state  
commitments  
of non-violent  
juveniles.

**2007**  
Juvenile Justice  
Realignment  
signed with  
Probation  
support; Probation  
takes over Juvenile  
Parole from CDCR,  
State enhances  
investments in  
local probation,  
evidence-based  
programming

Probation  
implements  
educational,  
rehabilitation,  
job training,  
and other  
social service  
programs.

**2008**  
Probation  
adopts new  
evidence-  
based  
approach for  
juveniles

Probation  
provides  
comprehensive  
reentry plans for  
young adults  
returning to their  
community and  
continues  
evidence-based  
programming  
and wrap around  
services for youth  
within the  
community.

**2010**  
Probation  
assumes  
responsibility  
for juvenile  
parole from  
Division of  
Juvenile Justice  
(DJJ)

About 8,000  
youth in juvenile  
detention or  
camps; More  
youth receive  
treatment and  
are supervised in  
the community.

**2012**  
Significant  
Reductions  
in Juvenile  
Detention due  
to enhanced  
use by  
probation  
of validated  
assessments  
and careful  
detention  
screening

Juvenile felony  
arrest rates fall  
73% over a  
10 year period.  
Probation  
continues  
individualized  
assessments  
and case  
planning to  
best meet the  
needs of youth  
and their family.

**2016**  
CPOC supports  
Prop 57 which is  
passed by voters  
ending the direct  
filing of juveniles  
to adult court

**2019**  
Juvenile  
detention  
at one of the  
lowest rates in  
history (about  
4,500 youth)

**2019**  
**Nearly 90%**  
of youth served in the community.



# The Evolution of Juvenile Justice

## How Probation Changed a Failing System



Chief Probation Officers of California





# Taken Into Foster Care, Through the Eyes of a Child





# Defining Trauma & G.R.I.T.

# Trauma and Trauma Exposure

- Trauma is the result of “...an event, series of events, or set of circumstances that is experienced by an individual as physically or emotionally harmful or life threatening and that has lasting adverse effects on the individual’s functioning and mental, physical, social, emotional, or spiritual well-being”
  - (Substance Abuse and Mental Health Services Administration [SAMHSA], 2012, p. 7).

# Posttraumatic stress disorder and trauma in youth in juvenile detention

- Most participants (92.5%) had experienced 1 or more traumas
- Significantly more males (93.2%) than females (84.0%) reported at least 1 traumatic experience;
- 11.2% of the sample met criteria for PTSD in the past year.
- More than half of the participants with PTSD reported witnessing violence as the precipitating trauma.

(Department of Psychiatry and Behavioral Sciences, Feinberg School of Medicine, Northwestern University, Chicago, IL , [Karen M Abram](#)<sup>1</sup>, [Linda A Teplin](#), [Devon R Charles](#), [Sandra L Longworth](#), [Gary M McClelland](#), [Mina K Dulcan](#))



# Court-Involved Youth & Trauma History

- As many as 90% of youth involved in the juvenile justice system have experienced at least 1 traumatic event.
- 84% experience more than 1 trauma
- 55% reported being exposed to trauma 6+ times
- At least 75% have experienced traumatic victimization

# Adverse Childhood Experiences (ACEs)

Physical Abuse

Emotional Abuse

Sexual Abuse

Physical Neglect

Emotional  
Neglect

Living w/ a parent  
or relative who  
has an untreated  
mental illness

Incarcerated  
Parent(s)

Living w/parents  
or caregivers who  
have substance  
abuse problems

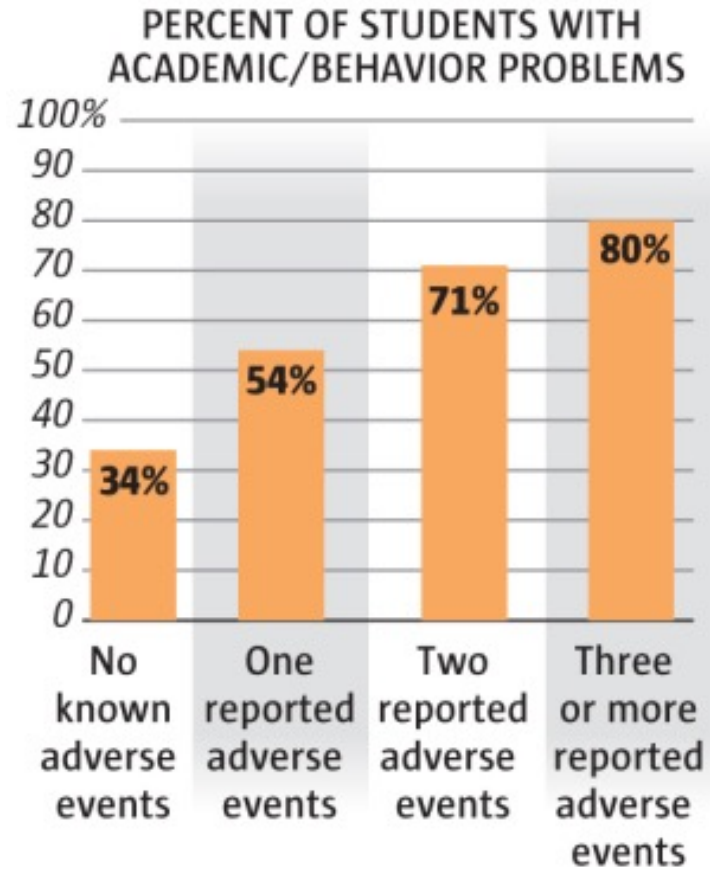
Divorce

Witnessing  
Domestic  
Violence

# The Philadelphia Urban ACE Study

- Over 13K children & adults from Southeastern PA
- 5 newly identified Urban ACE indicators: – **Experiencing racism, witnessing violence, living in an unsafe neighborhood, living in foster care, or experiencing bullying** (new score total 15 instead of 10)
- ACEs are prevalent in PHL
  - 81% of participants experienced >1 ACE indicator
  - 68% experienced >1 of the Standard ACE indicators
  - 58% experienced >1 of the newly established Urban ACE indicators
  - 45% experienced at least one Standard and at least one Urban indicator

# When ACEs Rise, Academics Fall



Source: Washington State University Area Health Project

MARK NOWLIN / THE SEATTLE TIMES



# Youth Most Affected By Trauma

- Court-Involved Youth
- Students in Foster Care
- Youth Experiencing Homelessness
- Youth Living in Poverty
- Youth Who Witnessed Domestic Violence
- Victims of Child Abuse
- Youth Living in Violent Neighborhoods

**When you think about the experiences of youth on your caseloads, how many of them fall into one or more of these student groups?**

# What's one word you would use to define grit?



# What is Grit?

“The tendency to sustain interest and effort towards long term goals.”

**Grit** | *Noun*

COURAGE, bravery, pluck, mettle, backbone, spirit, strength of character, strength of will, moral fiber, steel, nerve, fortitude, toughness, hardiness, resolve, resolution, determination, tenacity, perseverance, endurance; informal: guts, spunk.



Los Angeles County  
Office of Education

# T.H.U.G.



@mrjasonowilson

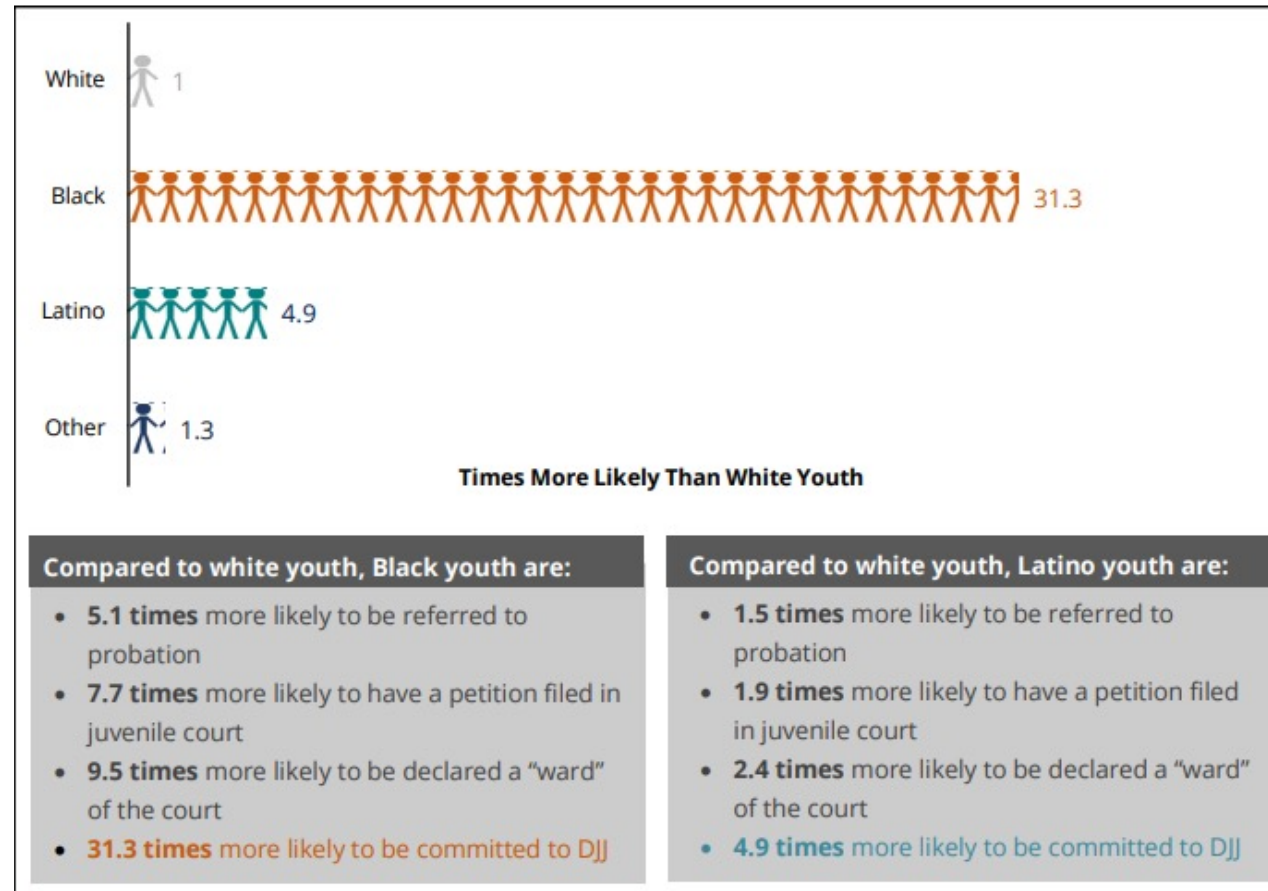
**T**raumatized **H**uman  
**U**nable to **G**rieve





# When Data Speaks: Demographics of Systems Involved Youth vs. CA School Expulsion Rate

Figure 2. Likelihood of DJJ Commitment, by Race (2019)



Source: DOJ, 2020.

Source: [Haywood Burns Institute, Center of Juvenile & Criminal Justice, and CA Alliance of Youth & Community Justice](#)

# When Data Speaks: Demographics of Systems Involved Youth vs. CA School Suspension Rates

## 2018-19 Suspension Rate (All Students)

Race / Ethnicity	Percent of Cumulative Enrollment	Percent of Students Suspended
African American	5.5%	14.4%
American Indian or Alaska Native	0.5%	1.1%
Asian	9.3%	2.7%
Filipino	2.4%	1.0%
Hispanic or Latino	54.6%	56.3%
Pacific Islander	0.5%	0.6%
White	22.7%	19.3%
Two or More Races	3.8%	3.8%
Not Reported	0.8%	0.8%
<b>Total</b>	<b>6,329,883</b>	<b>219,446</b>

## 2018-19 Suspension Rate (Foster Youth)

Race / Ethnicity	Percent of Cumulative Enrollment	Percent of Students Suspended
African American	18.2%	26.3%
American Indian or Alaska Native	1.4%	1.7%
Asian	1.2%	0.5%
Filipino	0.4%	0.3%
Hispanic or Latino	55.0%	46.6%
Pacific Islander	0.4%	0.4%
White	18.5%	18.7%
Two or More Races	3.5%	3.9%
Not Reported	1.4%	1.6%
<b>Total</b>	<b>46,810</b>	<b>7,070</b>

# The Effects of Negative Labeling

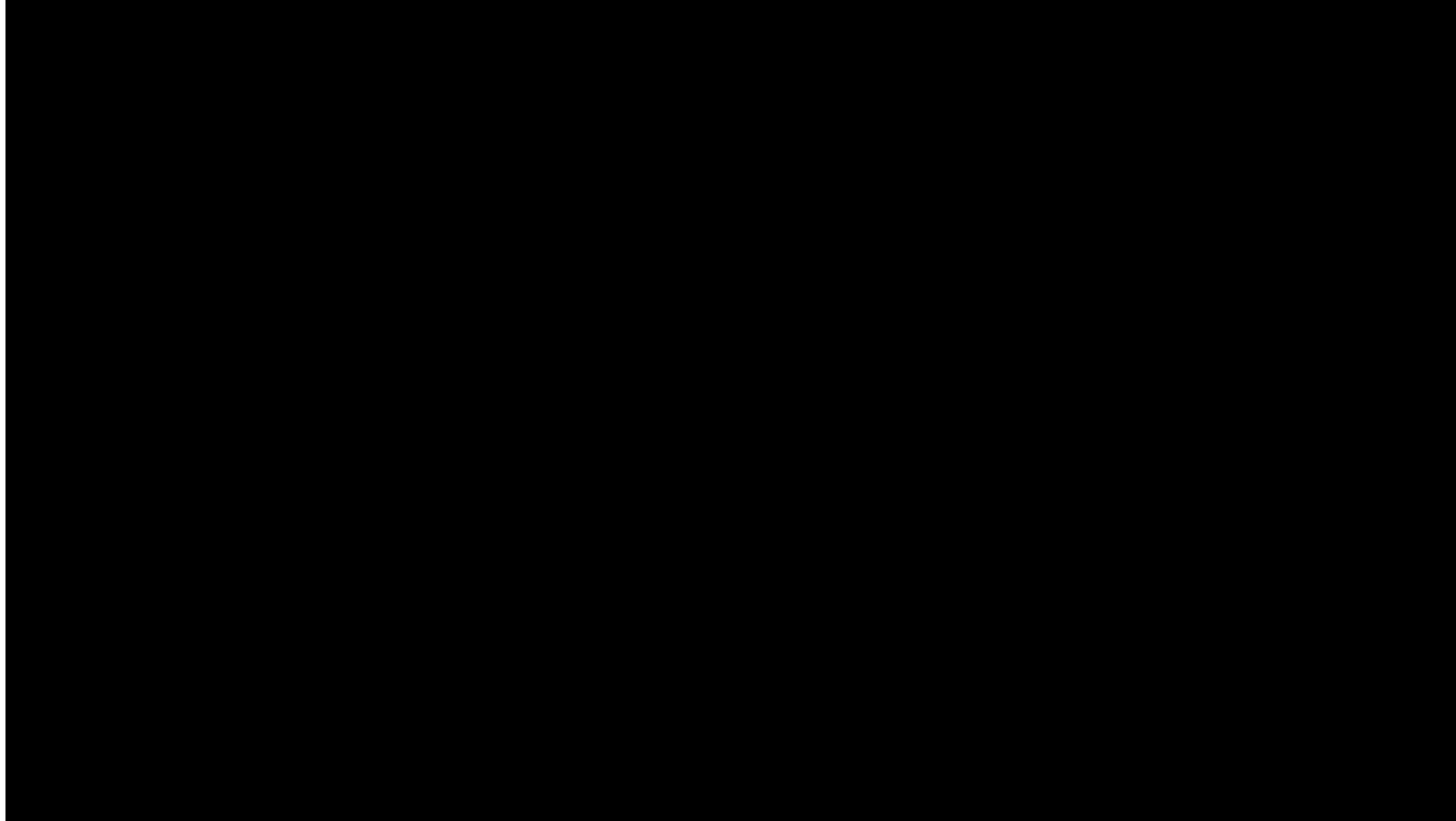




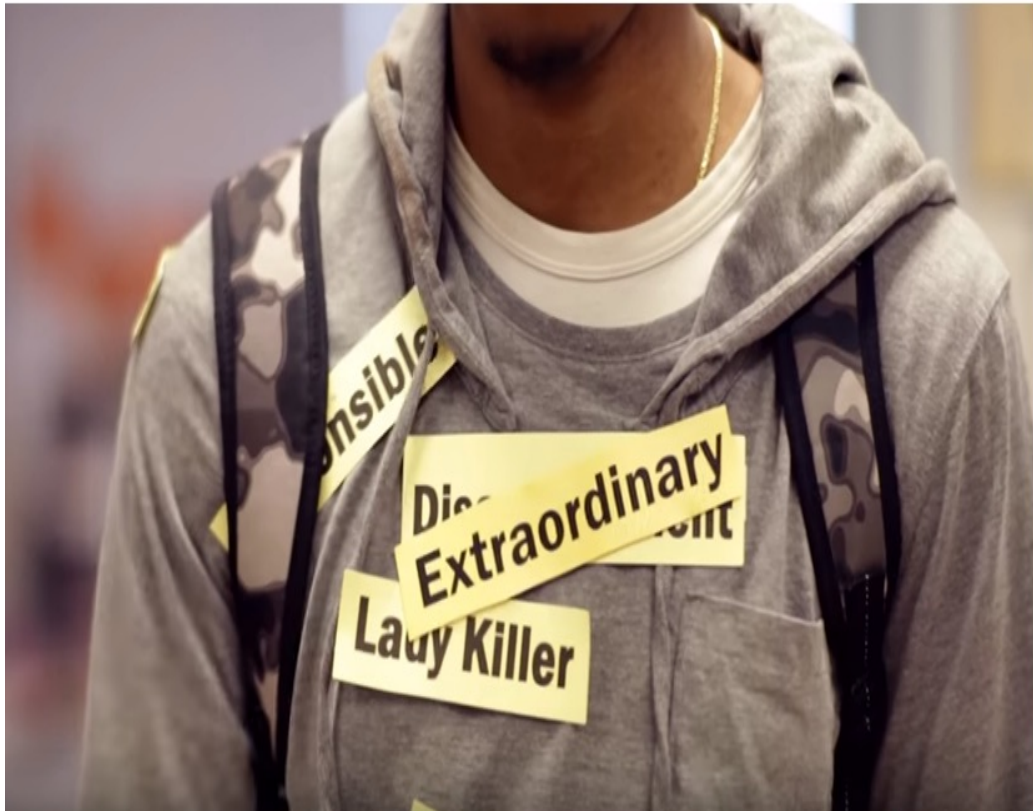
# How are students on probation and in foster care negatively labeled in society and on school campuses?



# Don't Label Me



# Change the Narrative



## Let's Talk



Share your thoughts...

- What stood out to you in this video?
- How does negative labeling impact a person's educational, behavioral, and/or overall outcomes?



# Redefining GRIT

**G**rowth **R**esilience **I**nspiration **T**enacity

# GROWTH



Set goals



Identify areas of personal-growth



Teach and or highlight self-regulatory skills



Contribute to students' growth daily

# Which plant would you choose?



**A**



**B**

# GROWTH



# RESILIENCE

Acknowledge Resilience

Teach Self-Care

Establish Supportive Relationships

Be Flexible



# Inspiration

Mentorship  
Dedication  
Collaboration  
Belief  
Impact



# Tenacity



EVERY **DIFFICULTY** IS AN **OPPORTUNITY** IN DISGUISE



# Believe that “You Can”

If you can lead a gang, you can run a company. If you can write raps 🖊️, you can write a book 📖. If you can film a street fight 📱, you can shoot a movie 🎥. If you can move keys 🗝️ you can own a trucking company. Don't just take over the block. Take over the world!!! Stop selling yourself short.

Chris Sain Jr. 100



# My Story: The Lived Experience of a Former Dual Status Systems-Involved Youth

Elizabeth Clews, Ventura County Office of Education Youth Voice  
Representative & Trauma Trainer

# Elizabeth Clews



- Mother
- Student
- Youth Advocate
- Former Dual Status Youth
- Resilient Person



# Education Entitlements for Systems Involved Youth

# Educational Rights

- ◆ Equal Access
- ◆ School District AB 490 Foster Care Educational Liaison
- ◆ School Selection
- ◆ Education Placement Decisions (Best Interest)
  - Educational Rights Holder obligations
- ◆ School of Origin
- ◆ Disputes
- ◆ Immediate Enrollment
- ◆ Credit Protection

# Additional Entitlements

- ◆ Access to Pupil Records
- ◆ High School Graduation Requirements
  - Drop-out prevention
- ◆ Notice Requirements
- ◆ Transportation
- ◆ CIF Eligibility
- ◆ See the CFYETF Fact Sheets for detailed information regarding all educational entitlements
- ◆ [http://www.cfyetf.org/publications\\_27\\_1555989899.pdf](http://www.cfyetf.org/publications_27_1555989899.pdf)

# Questions or Comments





# Our Contact Information

**Kim Faulkner-Camacho**

Faulkner\_Kimberly@lacoed.edu

**Dr. Michelle Lustig**

Lustig\_Michelle@lacoed.edu

# LASSEN COUNTY FOSTER YOUTH SERVICES COORDINATING PROGRAM

---



## Address:

2950 Riverside Drive, Suite 101  
Susanville, CA 96130





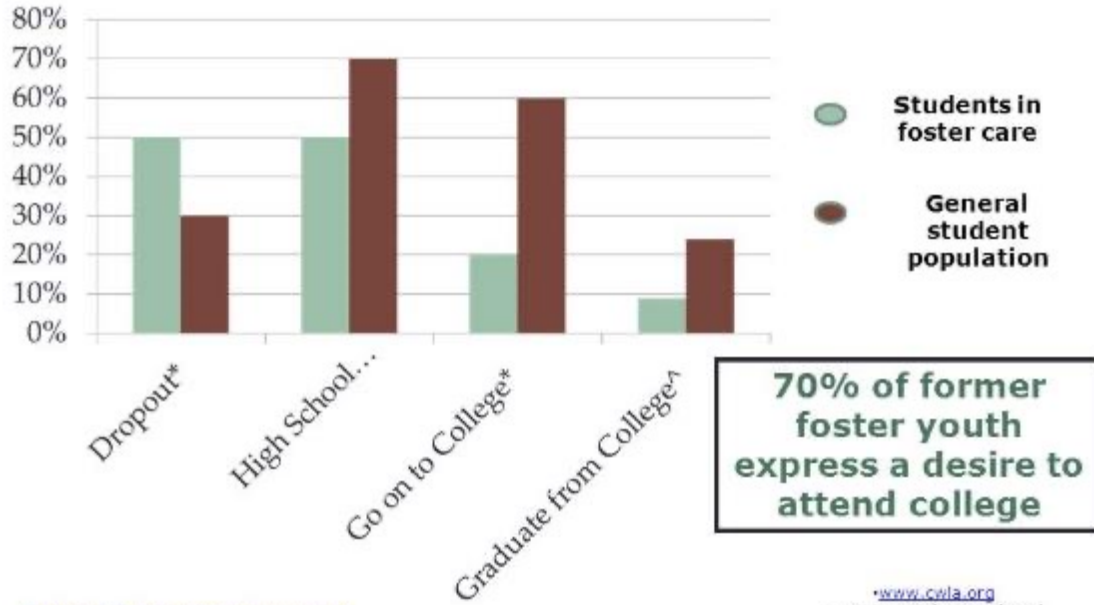
## WHO ARE WE?

- ❖ State-wide
- ❖ County operated
- ❖ **Housed at the Probation Department**
- ❖ Calli Oxford – FYS/ILP Program Manager
- ❖ Tiffany Bernardino – Probation Assistant

# Academic Challenges

## Why Are We Here?

Foster Care Alumni Studies: Education Outcomes



### ❖ Poor Educational Outcomes

- High Dropout Rates
- Low Test Scores
- Low Graduation Rates
- High Rates of School Mobility



## HOW DID WE GET HERE?

- ❖ AB490
- ❖ ESSA
- ❖ LCFF
- ❖ AB854



## WHO IS CONSIDERED A FOSTER YOUTH?



### ❖ AB490

- Any child who is the subject of a juvenile dependency court (Cal. Welf. & Inst. Code 300), whether or not the child has been removed from his or her home.
- Any child who is the subject of a juvenile court petition (Cal. Welf. & Inst. Code 602), **regardless of where the youth lives.**

### ❖ Local Control Funding Formula (LCFF)

- Any child who is the subject of a juvenile dependency court petition (Cal. Welf. & Inst. Code 300), whether or not the child has been removed from his or her home.
- Any child who is the subject of a juvenile delinquency court petition (Cal. Welf. & Inst. Code 602) **and who has been removed from his or her home by the court and placed into foster care under a “suitable placement” order. This includes youth who have been placed in a foster home, relative home, or group home. It does not include youth who have been placed in a juvenile detention facility, such as a juvenile hall or camp.**

### ❖ AB12

- Any youth age 18-21 who is under the jurisdiction of the juvenile court (i.e., is in extended foster care). See SB 859(2014), Cal. Educ. Code 42238.01



## What we do:

- ❖ Educational Case Management Services
  - Monthly meetings with foster youth
  - Meetings with school staff, caregivers and caseworkers
  - IEP
  - CFT
  - Attendance
  - Disciplinary
  - Grades







## ❖ Facilitate Collaboration

- Ensure coordinated and non-duplicative service delivery
- Ensure pupils in foster care receive educational supports and services to succeed in school
- Local Youth Empowerment Summit





## ❖ Records (HEP) Report

- Transcript
- Attendance
- Disciplinary
- IEP
- Immunization
- Birth Certificate
- Medical Reports



## ❖ Services

- Tutoring
- Mentoring
- Independent Living Program





## ❖ Post Secondary Education

- Admission
- Campus Tours
- Financial Aid

## ❖ Capacity Building

- Workshop
- LCAP
- Quarterly Meeting
- Other Meetings



## ❖ Advocacy

- School Placement
- Enrollment
- Credit Recovery
- Extra Curricular Activities
- AB 167/216



## How we differ:

- ❖ The FYSCP Manager is an employee of the Probation Department.
- ❖ The Probation Department has a standing MOU with county agencies which allows data sharing and communication.



