


All Hands-on Deck: Identifying and Supporting Commercially Sexually Exploited Youth in the Juvenile Justice System




Presented by:
Michelle Guymon, Director, Child Trafficking Unit
Los Angeles County Probation Department
Michelle.Guymon@probation.lacounty.gov

1

Training Overview

- Commercial Sexual Exploitation of Children (CSEC) Review
- Probation Child Trafficking Unit and Supports
- Senate Bill 794 Mandates
 - Indicators for Identification
- Housing/Foster Care
- Other Initiatives
- Gaps
- Resources
- Q&A (*Q&A throughout/chat box feature)



2

2010

- **June 2010:** LA County's Interagency Council on Child Abuse and Neglect
- **November 16, 2010:** *I learned that this exploitation wasn't something happening in a faraway country. In fact, it was happening right here, in our community, to the very young women I was charged to protect.*

**When you know better,
you do better!**

3

CSEC Overview



Saving Innocence: A Survivor's Story - Oree Freeman

4



5

CSEC Overview... Myths

1. Choice
2. Make Lots of Money / Renegade
3. All Exploiters are Male
4. Only Girls are CSE
5. CSEC/Y are not in the Strip Clubs

6

Pathways to Exploitation

Family

Man doesn't have money for food

Mom doesn't have money to pay for drug habit

Mom sells Alina

Runaway / Homelessness

Oliver and Jose live in a foster home

Jose wants more things than what the foster parent provides

Oliver tells Jose that the foster is way for him to make money fast

Oliver introduces Jose to a "client"

LGBTQ Youth

Eric's parents found out he's gay

Eric is kicked out of his home

Eric ends up homeless

Peer Recruitment

Tamika and CeCe live at a group home

Tamika convinces CeCe to run away so they can have more freedom

Tamika introduces CeCe to her "client"

7

Pathways to Exploitation

Internet/social media

Star has social media accounts

Star thinks she is talking to a 17 year-old...until she sees who knew he's really 35

➤ No Rules from their Parents/Caregivers

➤ 1 in 10 would tell their parent/caregiver if there were issues on their social media accounts directed at them

80%

1 in 10

8

LA County Probation Child Trafficking Unit (CTU)

- Established January 1, 2012
- Alternative to Detention Grant
- Additional Funding: SB 855, SB 794, RFP's
 - ❖ County Board of Supervisors

INTRODUCTION

In The Beginning...

Beginning in 2008, officials within the Los Angeles County Probation Department began to recognize the number of youth within their care who had experienced commercial sexual exploitation. With greater understanding of the issue came the realization that commercially sexually exploited children and youth are victims of child abuse and neglect of a form of exploitation, therefore child abuse reports and removal. Today the Los Angeles County Probation Department is focused on their ability to proactively identify youth who have been exploited and connect them with intensive, specialized services. While it is often a struggle to get here, it all began with a small number of champions.

9

Champions...

- Support from Probation Executive Management
- Traveled Across the Country
- County Board of Supervisors

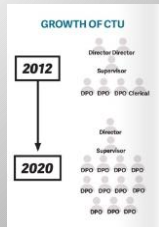
"The most important thing you can do is get your City or County government involved"



10

CTU Structure

- CTU Staffing in the beginning and today
- Director
- Supervisor
- (8) Case Carrying DPO's
- (1) Court Liaison & Multi-Disciplinary Team Lead



11

CTU Structure

- (1) Transition Age Youth / Assessment Lead
- (1) Locate Team Lead & Special Projects



12

CTU Enhanced Supervision Model

- Monthly Contact
- Keep the case until off Probation

"It's good to have a Po who knows what you have been through and has watched you grow. It helps to have the same Po no change and/or transfer."
- Survivor

CTU DPOs meet with youth two times per month, and communicate with them at least once every three days



13

More than Supervision...

- Vital Records
- Birthdays
- Baby Showers
- Graduations
- Prom Dresses
- College Tours
- Cosmetology Support
- Hospital Support
- JH Soft Rooms
- "Fun Friday's"



14

Empowerment Conference



15

S.T.A.R. Court

Succeeding thru Achievement & Resilience

- Specialized CSEC Juvenile Delinquency Court
- Frequent Review Hearings
- Consistency & Non-adversarial
- Court Team
 - ❖ Public Defender / DDA
 - ❖ Probation
 - ❖ Child Welfare
 - ❖ Public Health
 - ❖ Mental Health
 - ❖ Education
 - ❖ Advocates



16

Outcomes...

- High School Graduation
- Stay in Contact with someone from the team

“Redefine Success Everyday”
- Judge Pratt




GRADUATION RATES
Over the complex barrier that youth who have experienced CSE have faced, coupled with high rates of school instability, the STAR Court team is proud that 82% of youth in STAR Court eligible to graduate high school graduated, compared to 59% of foster youth statewide.



17

Best Practice Intervention...

The BEST Intervention is YOU!
Regardless if you have 5 minutes, 5 months, or 5 years with the youth. The relationship you develop will make a BIG difference!



18

Harm Reduction

**CDSS - Child Trafficking Response Unit

HISTORY

- Originally introduced in the 1980s
- An alternative to abstinence
- An approach utilized with adults who engaged in substance abuse/needle exchange



19

HR Basic Principles

➤ Focus on **decreasing the negative impact** of risky behaviors that can lead to harm, rather than attempting to **immediately eliminate the behaviors** altogether.



➤ Harm Reduction Continuum



20

Things to consider...

Do you feel the need to rescue the youth from the commercial sex industry?
Where does that need come from?

How is it knowing a youth/young adult may leave your office and engage in unsafe behaviors?

21

Things to consider...

System involved youth are accustomed to others exerting **POWER & CONTROL!**

This **same dynamic** occurs in exploitative situations and is a part of the pull that keeps them in those situations.

22

Things to consider...

We must accept the fact that a young person may be open to accepting help, but still not be in a place to acknowledge their victimization.

23

What does Harm Reduction Look Like?

- Messaging
- Safety Planning

“I made you a promise that I would call you each week to let you know that I am ok” -survivor-

24

What does Harm Reduction Look Like?

- Addressing Bench Warrants
- Detention as a last resort



If the only tool you have is a hammer, you tend to see every problem as a nail



25

From: @hss.sbcounty.gov>
Sent: 20 May 2020 10:35
To: @probation.lacounty.gov>
Cc: @probation.lacounty.gov
Subject: Collaboration and Just plain good work

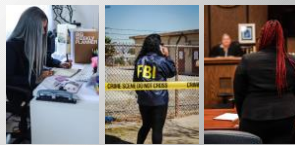
Good morning,
 In this world we often see negative examples and we are beset with images and circumstances that are not working. Therefore when things go really well and great examples are provided, I think it's important to stop and recognize some great work. We had a child who is on probation in LA come into our office from a runaway status. She was found in SB County and brought to our office and she immediately told us to call her Probation Officer and provided that number. My supervisor, reached out the Ms. to let her know the youth was here and that was the start of some great teaming and collaboration. Ms. was very cooperative and immediately made arrangements to pick up the child and noted she would be taking her to Bakersfield. Many times we end up having adversarial interactions with other agencies, counties and even states and it does not seem to be in the best interest of the child...but not this time. In this case, everything went very smooth and the reaction and communication was on point and very professional and appropriate. It was wonderful hear that child immediately tell us her Probation Officers name and provide that number for us to call. It speaks volumes to know she has trust in that relationship and felt safe knowing she would be guided and assisted. Oftentimes the youth we work with have lost that modicum of peace we take for granted and that essential component is so important to success of a child when they become adults. I called Ms. to thank her and she said something very important: "This is how we do our job in our department." That speaks loudly to me as it did not seem out of the ordinary to her because a culture of collaboration, teaming and taking care of business to ensure the safety of our children has been built and maintained. For that, I want to thank you for leading such a team where that effort is every day, all day and not an exception.

Take care, remain safe and healthy and thank you for providing us with a great example that lifted us up.

26

Lessons Learned...

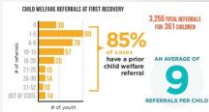
- **Do: See the youth as a person first**
Don't: Solely focus on the exploitation
- **Do: Stay consistent, stay committed (7-Years)**
Don't: Take a youth's slow progress, or a lack thereof, personally



27

Lessons Learned...

- **Do: Understand that trauma takes time!**
Don't: Disregard the impact of trauma on the youth's behaviors



- **Do: Always be upfront and honest about your intentions**
Don't: Mislead or omit information from the youth

28

Lessons Learned...

- **Do: Recognize, Affirm, and Celebrate the small stuff!**
- Don't: Just focus on COP, relapse, etc.
- **Do: Focus on building relationships of support – and understand that it will take time**

“What made the difference was knowing that my Probation Officer never gave up on me”
-survivor at a conference in Phoenix-

29

Lessons Learned

- Importance of Self-care
- Understanding of Vicarious & Secondary Trauma
- Be intentional about the issue with your team

We have to acknowledge that we are neither robots nor superheroes. We are humans and will be impacted by our work.



30



31

Senate Bill 794

On September 29, 2014, the federal Preventing Sex Trafficking and Strengthening Families Act (H.R. 4980) was signed into law, which required states to develop and implement policies and procedures related to Commercially Sexually Exploited Children (CSEC) and runaway or missing children and youth. In 2015, the California legislature codified the requirements of the federal law in Senate Bill 794 (SB 794), through the additions of Welfare and Institutions Code (WIC) sections 16501.35 and 16501.45. These requirements apply to all counties in California.


Mandates:

- > Identification
- > Mandated Reporting
- > MDT's (Crisis, Initial, On-going)
- > Determine Appropriate Services
- > Missing/Runaway Youth
 - > LE Notification
 - > NCMEC Notification
 - > Expeditiously Locate
 - > Debrief w/youth upon Return

32

Indicators for Identification

- ***Branding**
 - Visible
 - References to money or "the game"
 - Crowns



33

Indicators for Identification
 * **Running Away**

- Frequency
- Length of Time
- How are they getting their basic needs met?
- Older boyfriend
- Out of County / State Travel

The infographic includes a house icon with text: '70% OF YOUTH LIVED AT HOME AT TIME OF FIRST RECOVERY' and '30% LIVED OUT OF HOME'. Below it is a pie chart with segments for 'Food', 'Clothing', and 'Shelter', with a red question mark in the center.

34

Indicators for Identification
 * **Social Media**

- Social Media Posts
- Explicit Photos
- Several cell phones / changes cell number frequently

The image shows a smartphone screen displaying a list of social media profiles with 'Like' buttons. To the left is a close-up photo of a hand holding a stack of US dollar bills.

35

Indicators for Identification
Other things to consider...

- Money and other material things
- Repeat testing for pregnancy / STI's
- Problems with sleeping
- Physical trauma
- Sexual Abuse history
- Constantly on edge / hypervigilant
- Distrust of Adults

36

CAUTION: Labels Over-Identification



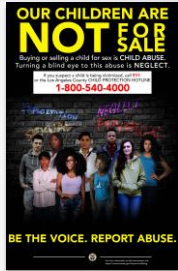
37

See Me!



38

Mandated Reporting Multi-Disciplinary Teams



MDT Partners:

- ❖ Child Welfare
- ❖ Probation
- ❖ Mental Health
- ❖ Public Health
- ❖ Education
- ❖ Advocates
- ❖ Youth's Attorney, etc.

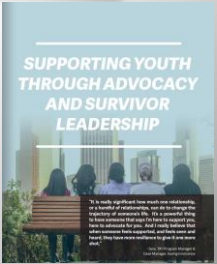


Types of MDT's:
Crisis – Initial - On-going

39

Appropriate Services
*Advocacy Services

- 11-21-year old's
- 24-hour crisis response
- Safety Planning
- Empowerment Activities
- Transportation
- MDT/CFT participation
- ❖ Case managers
- ❖ Survivors
- ❖ Parent Advocates




The poster features the title "SUPPORTING YOUTH THROUGH ADVOCACY AND SURVIVOR LEADERSHIP" in white text on a blue background. Below the title is a photograph of three young women sitting on a wooden bench in an urban setting. To the right of the photo is a block of text in a smaller font, which is partially obscured but appears to discuss the importance of youth involvement in advocacy and survivor leadership.

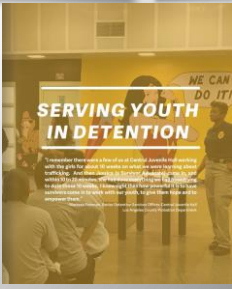
40

Appropriate Services
CSEC Prevention

Prevention Curriculum
“Word on the Street: Educating and Empowering Young Women and Girls”



- 6-Week Workshop
- 1-Day Conference
- 90-Minute Group
- Workbooks
- *Spanish





The poster for "SERVING YOUTH IN DETENTION" shows a group of people in a hallway. The title is in large, bold, white letters. Below the title is a paragraph of text that is difficult to read but seems to describe a program aimed at supporting youth in detention.

41

Appropriate Services
Intervention Curriculum

➤ **6 Volumes**

- ❖ 4 Chapters each
- **Pilot June 17, 2020**
- **Available January 2021**

The content pages show various sections with titles like "Contents", "Let's Play", and "Just Below the Surface". The "Becoming Me" poster features a photograph of three young women walking together, with the title "Becoming Me" written in a large, white, cursive font over the image.

42



43

Seven horizontal lines for handwritten notes on slide 43.

Appropriate Services

Parent Empowerment Program

- 10-Week Psycho-education groups
- 2.5 Hours / Dinner provided
- Facilitated by: DMH, Parent Advocate, Wraparound providers, etc.

*Stipends for childcare and transportation

- DMH to provide additional community support groups

Parents with Developmentally Disabled Children (DDC) are invited to a 10-week Parent Empowerment Program. This program provides caregivers with support and information about the ability to be a caregiver in a residential environment.

OBJECTIVES:

- Educate parents on child abuse and neglect and the importance of reporting and documenting suspected child abuse and neglect.
- Educate parents on child sexual abuse and exploitation, including commercial sexual exploitation.
- Educate parents on child labor and forced labor, including commercial sexual exploitation.
- Educate parents on child trafficking, including commercial sexual exploitation.
- Educate parents on child labor and forced labor, including commercial sexual exploitation.
- Educate parents on child labor and forced labor, including commercial sexual exploitation.
- Educate parents on child labor and forced labor, including commercial sexual exploitation.

Parents are eligible for this program if they are: 18 years of age or older, a resident of the county, and have a child with a developmental disability who is 18 years of age or older. This program is provided at no cost to participants. For more information, please contact the Parent Empowerment Program at (916) 845-2200.

44

Seven horizontal lines for handwritten notes on slide 44.

Missing/Runaway Youth

SB 794 requires the county probation or welfare department to immediately, or in no case later than 24 hours from receipt of the information, report to the law enforcement agency having jurisdiction over the case any known or suspected instance of child abuse involving an allegation of commercial sexual exploitation, as defined, of a child or youth receiving child welfare services. Requires the county probation or welfare department to make a report to the appropriate law enforcement authority for entry into the National Crime Information Center database of the Federal Bureau of Investigation and to the National Center for Missing and Exploited Children within 24 hours of becoming aware that a child or youth who is receiving child welfare services and who is known or suspected to be the victim of commercial sexual exploitation is missing or has been abducted.

45

Seven horizontal lines for handwritten notes on slide 45.



Non-Minor Dependents
 ➤ Reasonably Suspect Foul Play

46

Missing/Runaway Youth

Expediently locate

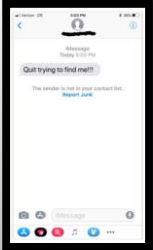
- Contacting the individual(s) who noticed the youth's disappearance;
- **Contacting significant persons in the youth's life (parent(s)/guardian(s), siblings, relatives, friends, former caregivers, former/current schools, service providers, etc.);**
- Requesting the caregiver and/or parent contact the above individuals and report additional information obtained or known whereabouts of the youth;
- Following up on leads received regarding the youth's whereabouts;
- Conducting visits to relevant addresses;

47

Missing/Runaway Youth

Expediently locate cont.

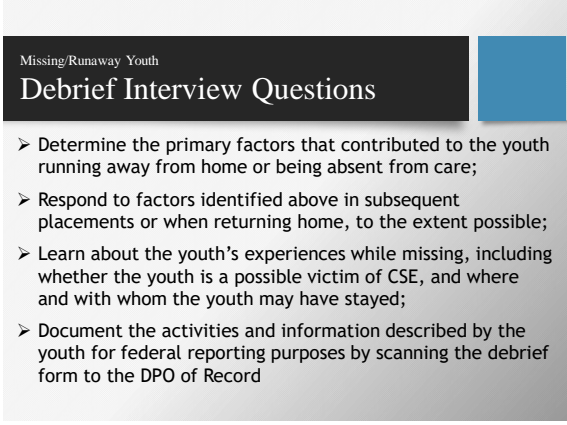
- **Requesting law enforcement conduct a welfare check;**
- **Searching social media** (if authorized to do so);
- Searching public locator databases (e.g. California Missing Child Clearinghouse, NCMEC other probation systems, etc.)
- ***Physically checking all places the youth is likely to be**



48



49



50



51

Exploiter Accountability

Holding Exploiters Accountable
 As of September 2018
 > 101 Adults under probation supervision w/charges related to Trafficking

Average Age: 31
 19 / 64

Ethnicity:
 > B = 73
 > H = 11
 > W = 5
 > O = 12

82 19

52

On Nov. 16, 2015, the board passed a motion, noting that LA needed "a single, countywide body to **manage, coordinate, and monitor the county's many CSEC initiatives.**" The result was the LA County CSEC Integrated Leadership Team (ILT). The Team is jointly led by Probation, DCFS and the LA County Sheriff's Department.

LA County Board of Supervisors
"Integrated Leadership Team" est. 2015

Board of Supervisors
 Integrated Leadership Team
 County CSEC Steering Committee
 Workgroups

Other CSEC/Y Initiatives

53

Strategic Plan
 to address a variety of areas

- State Mandates
- County Protocols
- Training & Resources
- Prevention Intervention
- Holding Exploiters & Buyers Accountable

54

Training

June 2011 - Dec 2019 CSEC Trainings

A collaboration effort by the Los Angeles Probation Department, Department of Children and Family Services, and Health Branch Specialists provided some of the training for probation officers, social workers, public health, mental health, group home providers, foster family agencies, attorneys, law enforcement, health services, education, religious, CD/DHHS/DC, DPW, health centers, and community centers.

More than 19 types of training and 256 trainings offered to 26,287 providers trained to more effectively work with CSEC survivors.

LA County On-Line CSEC 101 Module

This CSEC 101 module is available to LA County employees and covers an overview of CSEC 101.

71,337 participants trained!

Great info... more the number of families we have been to over the years, it is likely we have crossed this situation and did not recognize it. gonna have my eyes a little more open to what's going on around the house other than just the patient. - FYA

I thought the training was wonderfully done and EXTREMELY INFORMATIVE... but I was disappointed it was engaging, and just very real... as if made me sad. But I think that's wonderful. I learned a lot from it, and I think everyone should see this! Very useful... LA County Office of Child Protection

It's truly been amazing that we did it in May and again within three days of actions going out regarding the coronavirus and people. I will never let any other LA County employee... thank you for the class, and report any suggestions of feedback via trafficking. Thank you for the course. - The Department

Thank you!!!!!! What an eye opener!!!! ~ ISD

YouTube:
"The Commercial Sexual Exploitation of Children: CSEC 101"

55



Detention Protocol

LOS ANGELES COUNTY DETENTION INTERAGENCY IDENTIFICATION AND RESPONSE PROTOCOL FOR COMMERCIALLY SEXUALLY EXPLOITED CHILDREN AND YOUTH

AGENCY COLLABORATION

The Interagency Identification and Response Protocol for Commercially Sexually Exploited Children and Youth was developed in response to the need for a clear plan of action, inter-agency communication and collaboration to ensure the best outcomes for the most vulnerable and at-risk youth in our community system. The goal of this protocol is to ensure the best outcomes for all youth.

"What is better than the presence of a child in every night sleep from other departments and the necessary facilities, and all of us to say up... Our common responsibility is to make sure that this is a system that works, and that we are all part of it."

56



EXECUTIVE SUMMARY

How The Protocol Works

The better the data, the more we can identify and respond to cases. The protocol identifies the staff member to take a number of initial actions, which include interagency communication, inter-agency and agency communication, and public and community engagement. The protocol identifies the staff member to take a number of initial actions, which include interagency communication, inter-agency and agency communication, and public and community engagement.

- CALL TO CRIME PROTECTION POLICE to report abuse
- NOTIFICATION TO CTA AND CSEC COORDINATOR to report case and agency partner
- NOTIFICATION TO MEDICAL AND MENTAL HEALTH STAFF to assess and address immediate needs
- INTERDISCIPLINARY TEAM MEETINGS to review progress and identify next steps
- CONNECTIONS TO RESOURCES IN THE COMMUNITY

EXECUTIVE SUMMARY

What We Know

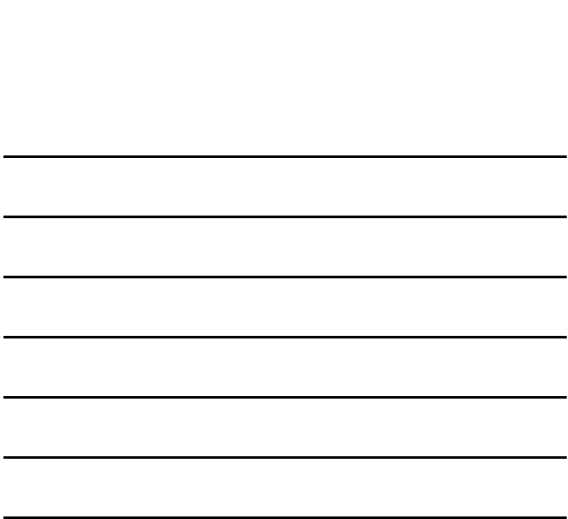
The preliminary data from the Interagency Protocol of County policy changes, and we believe have improved outcomes for youth. The protocol identifies the staff member to take a number of initial actions, which include interagency communication, inter-agency and agency communication, and public and community engagement.

DISCLOSED IN A PUBLIC HEARING: 477, 37, 15

RELATIONSHIPS AFFECT EVERYTHING

20% of cases are identified through the protocol.

57



INTER-AGENCY DETENTION PROTOCOL FOR COMMERCIALLY SEXUALLY EXPLOITED (CSE) CHILDREN & YOUTH

KEY STEPS/PROBATION

If you believe your case meets criteria that a youth has been commercially sexually exploited (CSE), use the following steps:

- 1. **CALL THE CHILD PROTECTION HOTLINE TO REPORT ABUSE:** (800) 540-4500
- 2. **PROBATION/CHILD TRAFFICKING UNIT:** Child Protection Unit, Probation and Parole Services
- 3. **CSO/CONSENTOR:** Child Support Office
- 4. **REPORT TO POLICE:** Local Law Enforcement (CLE) or Adult Protective Services (APS)
- 5. **ADULT PROTECTIVE SERVICES (APS):** APS will investigate and coordinate with Probation and Parole Services (PPS)
- 6. **COMMUNITY POLICE:** Community police will investigate and coordinate with Probation and Parole Services (PPS)
- 7. **ADULT PROTECTIVE SERVICES (APS):** APS will investigate and coordinate with Probation and Parole Services (PPS)
- 8. **COMMUNITY POLICE:** Community police will investigate and coordinate with Probation and Parole Services (PPS)

WINNEMAN SERVICES FOR COMMERCIAL SEXUAL EXPLOITATION:

Service	Agency	Phone Number
Adult Protective Services	Department of Health and Human Services	(800) 540-4500
Child Support Office	Department of Health and Human Services	(800) 540-4500
Community Police	Local Law Enforcement	(800) 540-4500
Police	Local Law Enforcement	(800) 540-4500
Probation and Parole Services	Department of Health and Human Services	(800) 540-4500

58

Housing / Foster Care

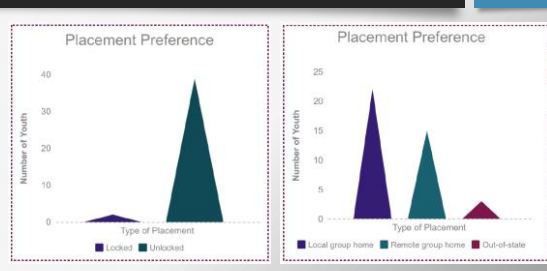


Foster Care Provider Roundtable

59

Youth Survey (39 CSE youth surveyed - 2014)

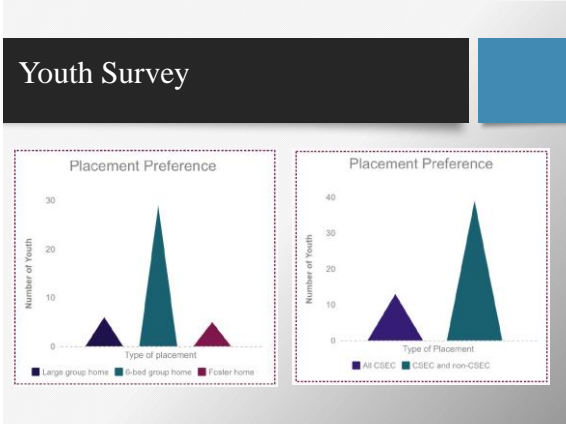
Placement Preference



Type of Placement	Number of Youth
Locked	2
Unlocked	37

Type of Placement	Number of Youth
Local group home	22
Remote group home	13
Out-of-state	4

60



61

- ### Youth Survey
- ◆ Have CSEC Survivors as staff
 - ◆ Have more family visits
 - ◆ Allow us to have cell phones
 - ◆ Allow us to have individual bedrooms
 - ◆ Offer independent living skill resources
 - ◆ Offer job readiness resources
 - ◆ Feel welcoming and like a real home
 - ◆ Offer more programs
 - ◆ Have therapy more times per week, if wanted
 - ◆ Enroll us in school sooner
 - ◆ Have staff that are comfortable talking about 'the life' and won't judge us
 - ◆ Offer more fun and developmentally appropriate activities
 - ◆ Have staff who acted like mentors instead of guards
 - ◆ Have cable TV
 - ◆ Connect us to advocates
 - ◆ Increase our allowances
 - ◆ Keep us busy

62

Research / Relationships!

Commercially Sexually Exploited Girls and Young Women Involved in Child Welfare and Juvenile Justice in Los Angeles County: An Exploration and Evaluation of Placement Experiences and Services Received

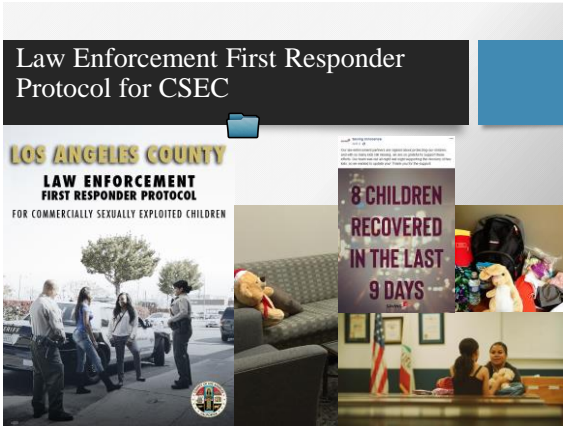
Authors:
 Cary B. Donenberg, PhD
 School of Public Health and Community California State University, Los Angeles
 Kim Mullen-Brown, JD
 National Center for Youth Law

Contributors:
 Marissa Rodriguez, BSW
 National Center for Youth Law
 Ellen Krasner, JD
 National Center for Youth Law

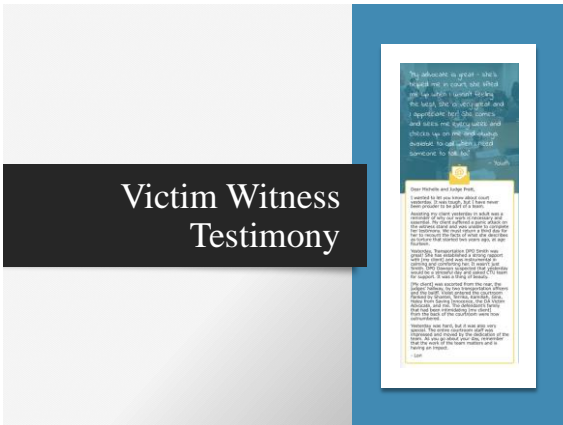
Once with her Probation Officer

"For me, it wasn't the placement that helped save my life. It wasn't the program that saved my life, or a curriculum that saved my life. It was the people that saved my life." - Crea, Survivor

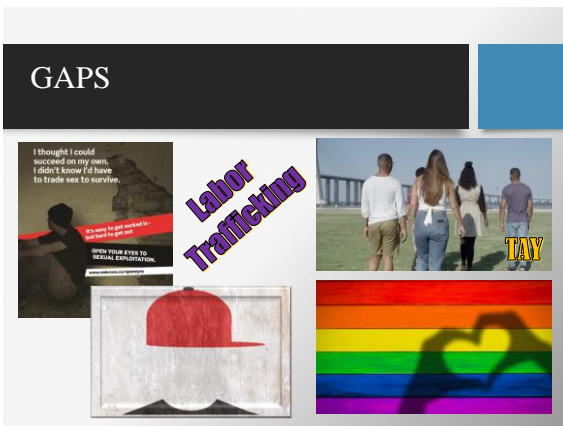
63



64



65



66

Resources

- “All Hands on Deck” – (in **chat box**)
- Drop box – (in **chat box**)

Resources in drop box


- FRP & 4-Year report
- Detention protocol
- Training summary
- Housing Report




67

Resources in Drop Box

- Harm Reduction Series
- ASU Desk Guides
- **CPOC CSEC Webinar Series**

68



For more information:
childtrafficking@probation.lacounty.gov

69